

Pasquotank County Property Card

(click [HERE](#) for previous version)

PIN: 891309065598

MAP: P89-51

Deed Book: 1178 / Deed Page: 89 / Date: 20130628

Location: 00530 S HUGHES BLVD

	Prior Evaluation Year: 2006	Current Evaluation Year: 2014
Land	\$200500	\$169500
Use Land	\$0	\$0
Building	\$0	\$0
Total	\$200500	\$169500
Assessed	\$200500	\$169500

TWIFORD IV LLC  
429 S HUGHES BLVD

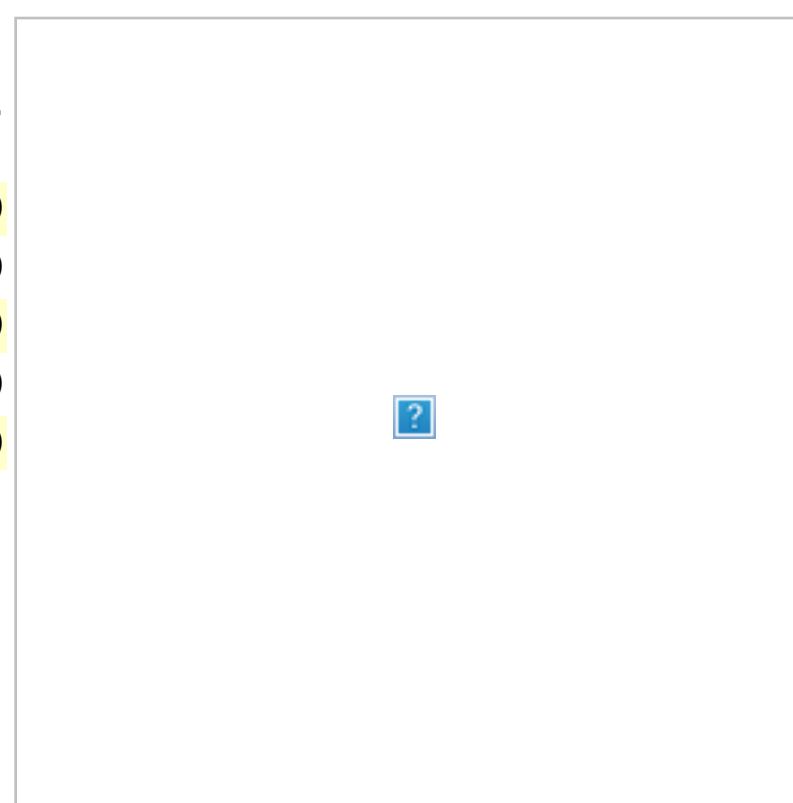
ELIZABETH CITY, NC 27909

Acct: 0009322

Estimated County Tax: \$1305.15

Estimated City Tax: \$1110.225

Notes



Click on any thumbnail for a full size map.

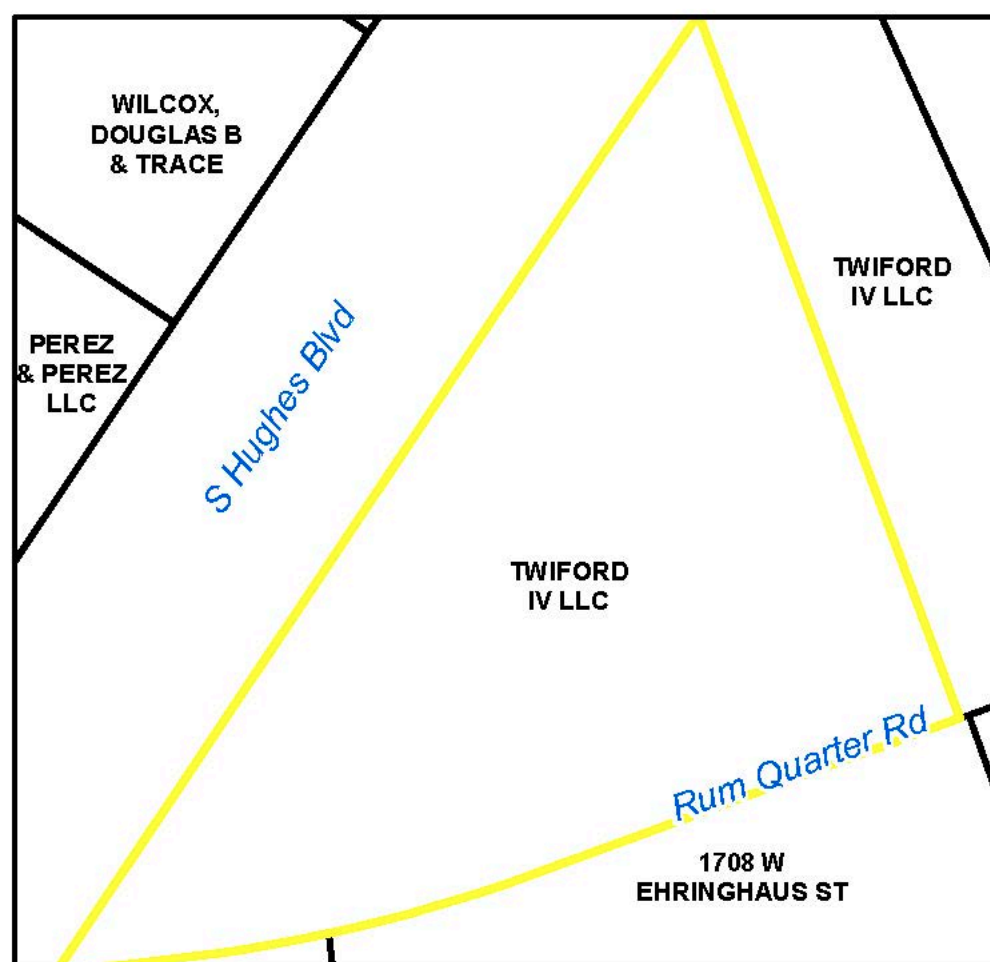
[Pasquotank Interactive GIS Map](#)

Aerial Map



Aerial

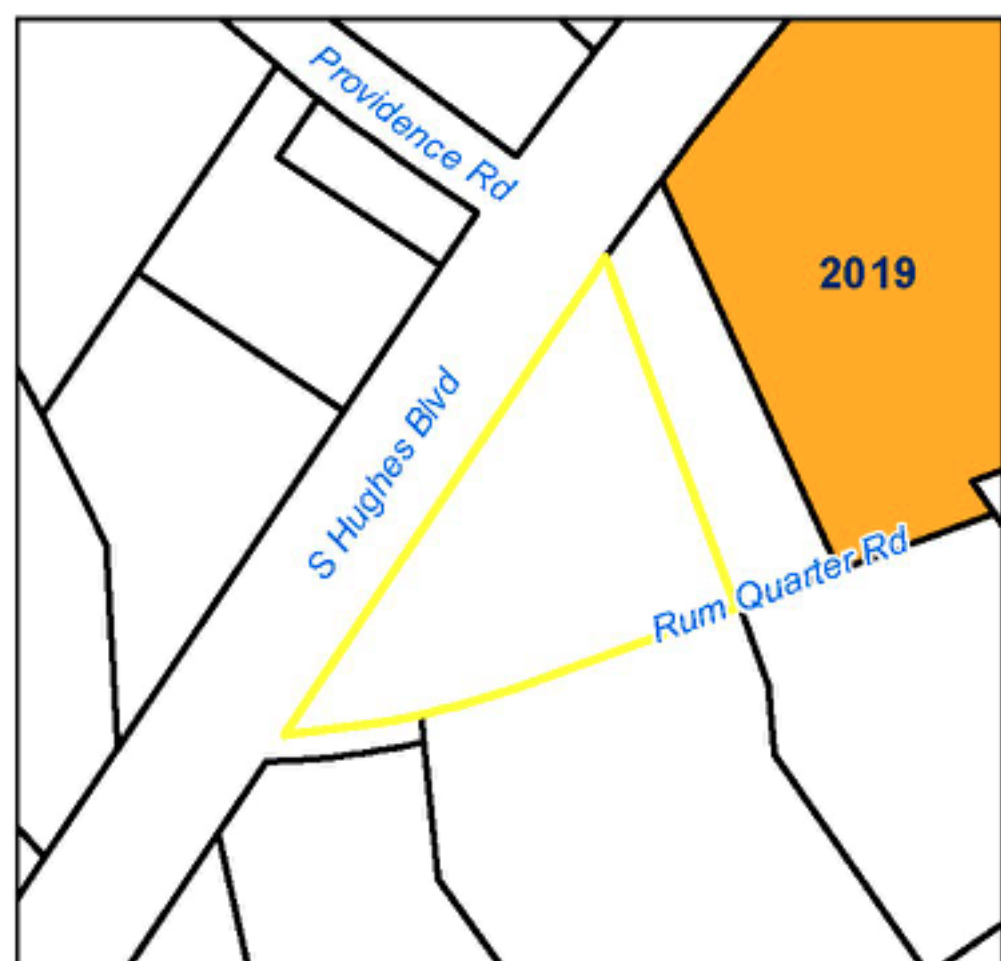
P89-51



Neighbors

P89-51

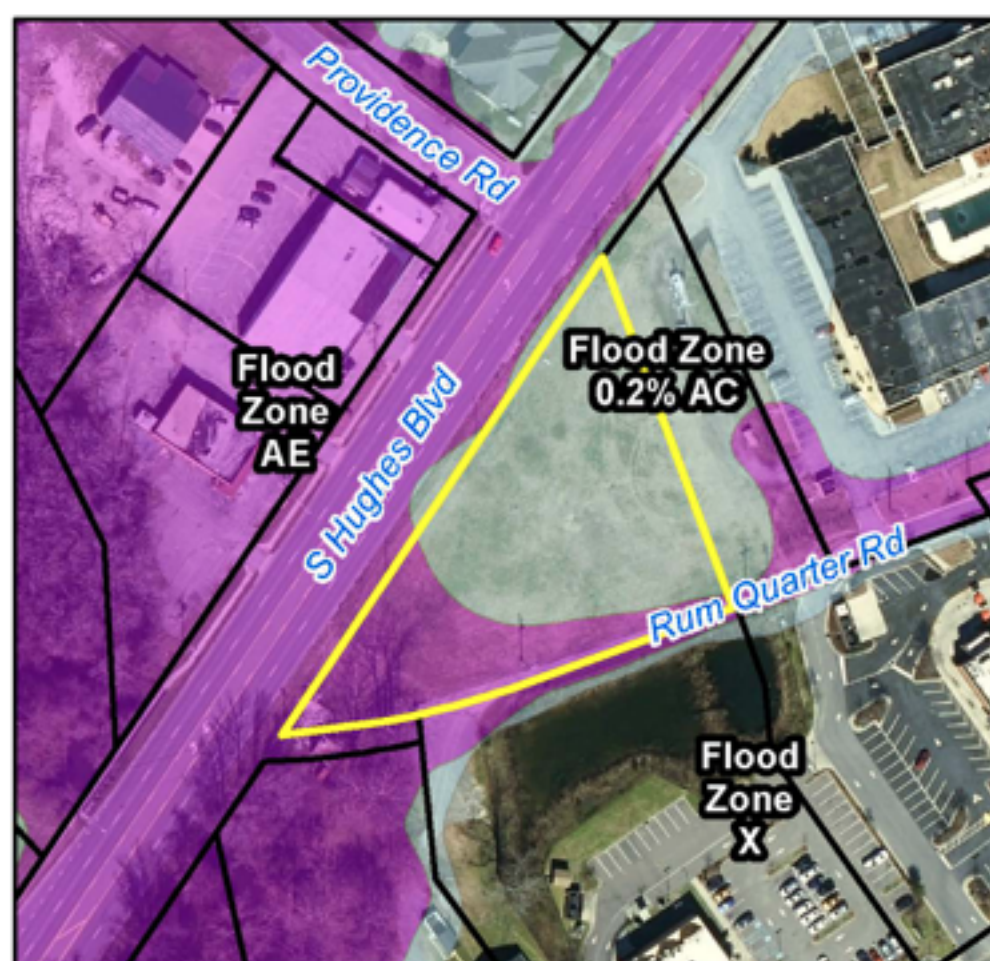
Nearby Sales



Sales

P89-51

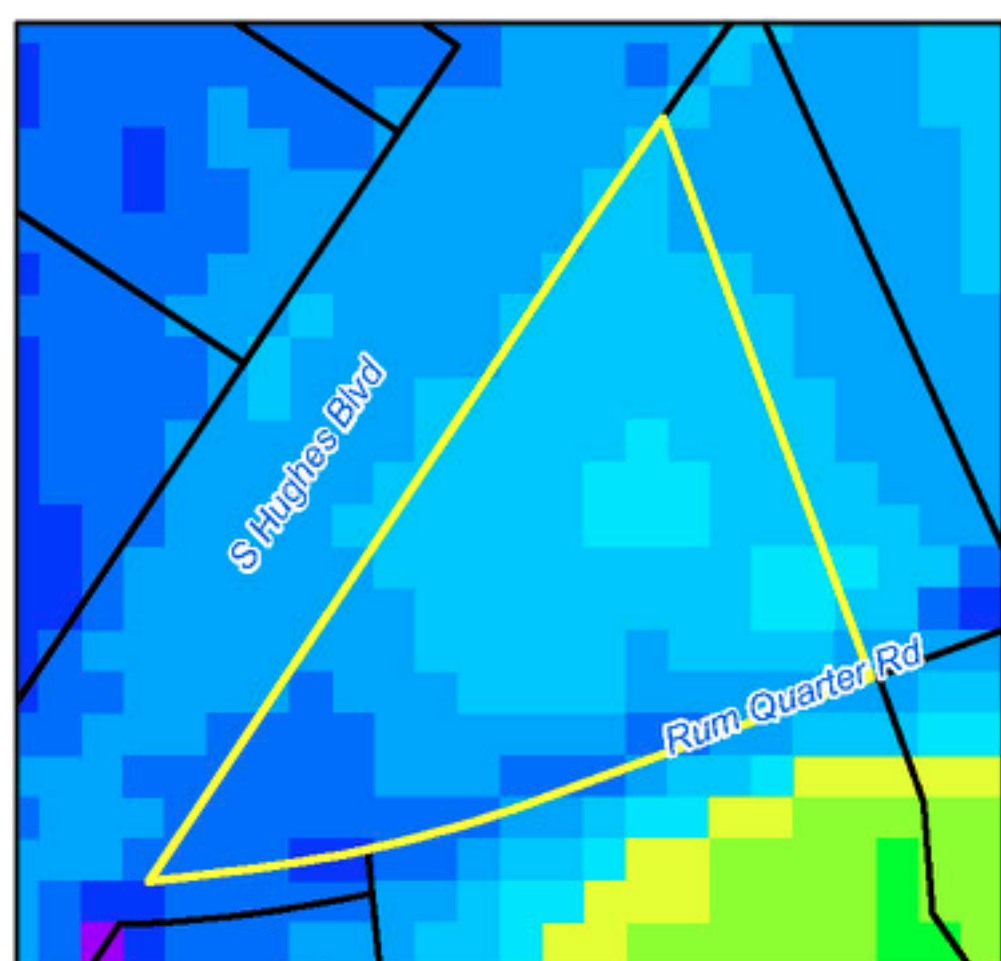
Flood Maps - effective Dec 21, 2018



Flood Zone

P89-51

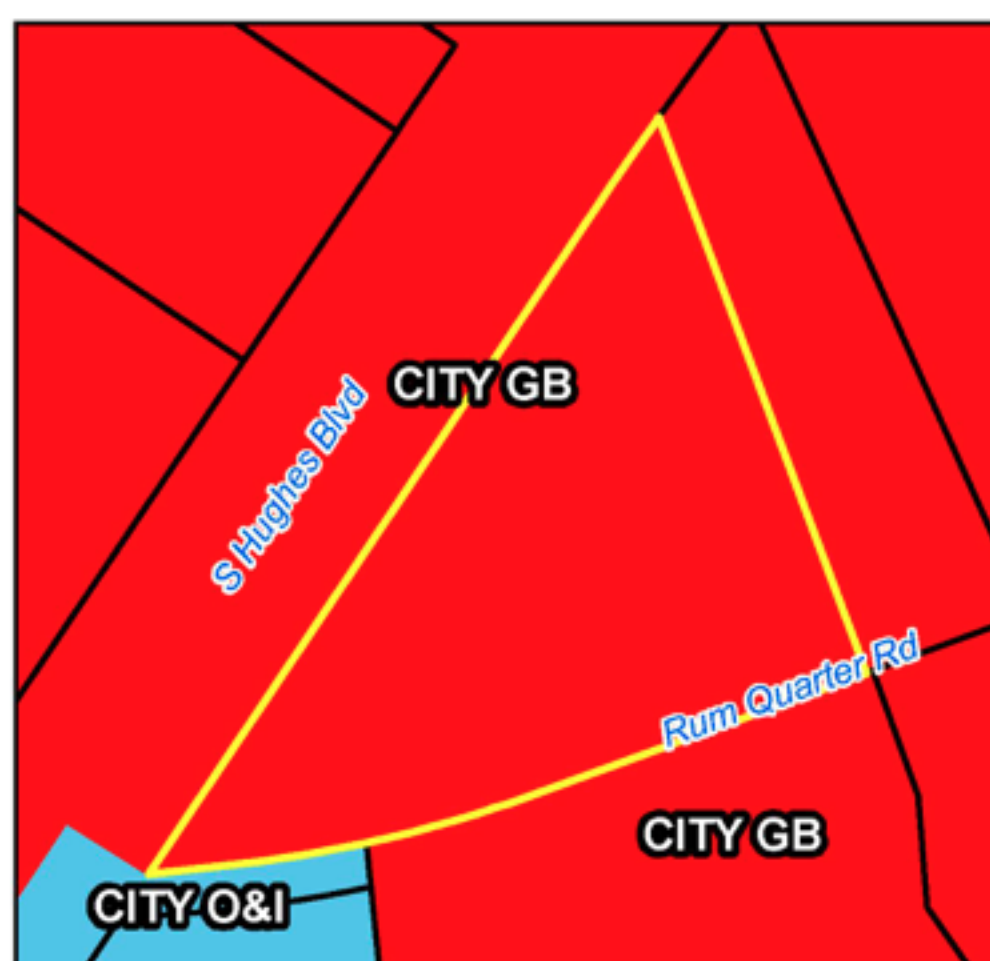
Elevation



Elevation

P89-51

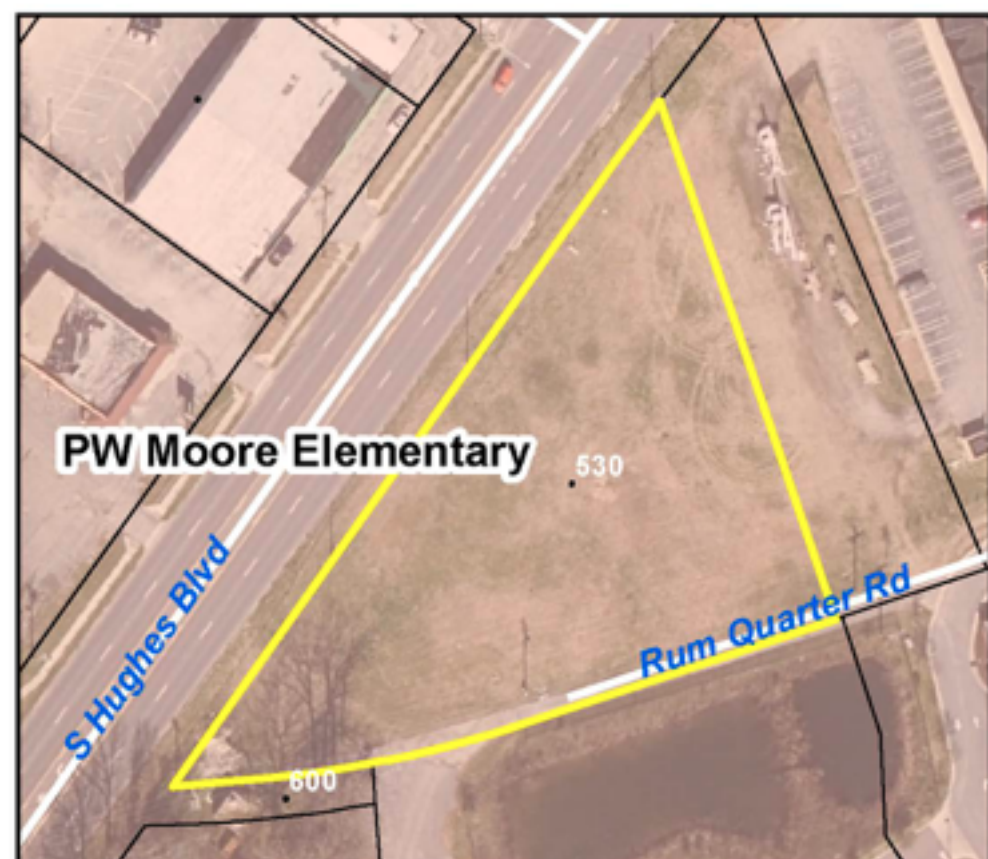
Zoning



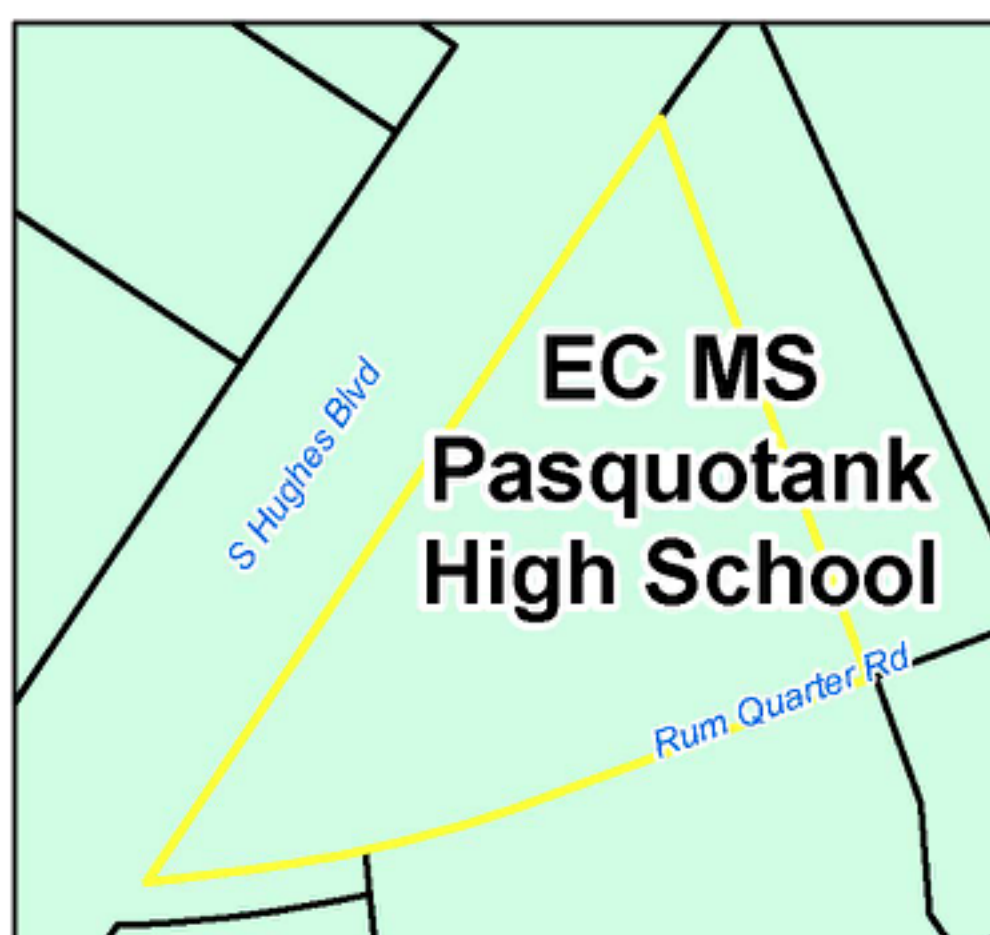
Zoning

P89-51

Elementary School Attendance Zone



891309065598

This is for informational purposes only.  
ECPPS has final authority on district lines.

891309065598

Middle/High School

P89-51

## Historic Imagery

[1996](#)[2003](#)[2003 Post-Isabel](#)[2008](#)[2010](#)[2012](#)[2016](#)