

Pasquotank County Property Card

(click [HERE](#) for previous version)

PIN: 891309068715

MAP: P89-50A

Deed Book: 1187 / Deed Page: 608 / Date: 20131010

Location: 00000 S HUGHES BLVD

TWIFORD IV LLC
429 S HUGHES BLVD

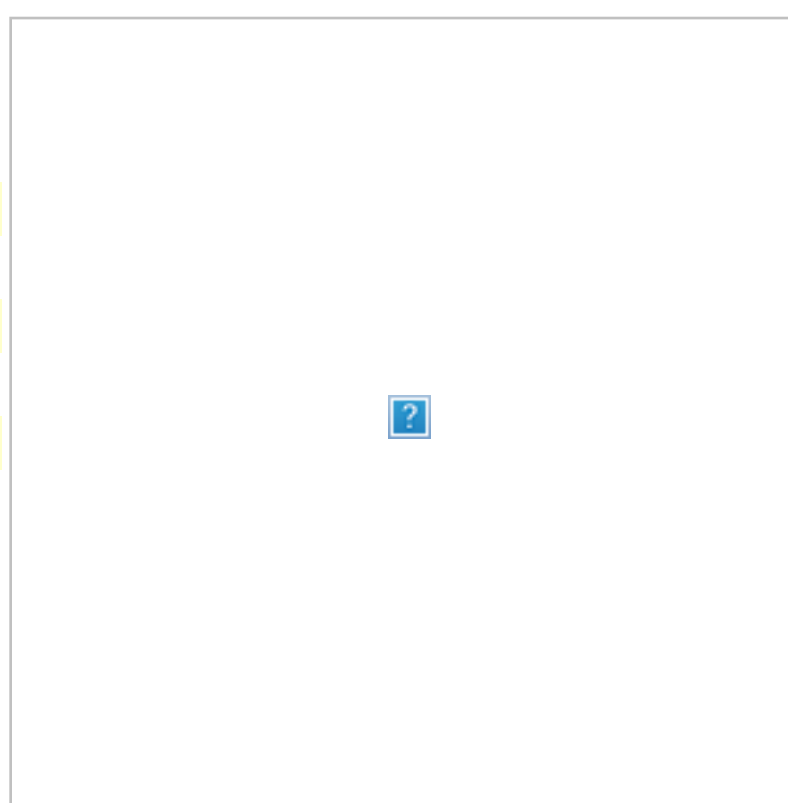
ELIZABETH CITY, NC 27909

Acct: 0063193

Estimated County Tax: \$744.59
Estimated City Tax: \$633.385

	Prior Evaluation Year: 2006	Current Evaluation Year: 2014
Land	\$113800	\$96700
Use Land	\$0	\$0
Building	\$0	\$0
Total	\$113800	\$96700
Assessed	\$113800	\$96700

Notes



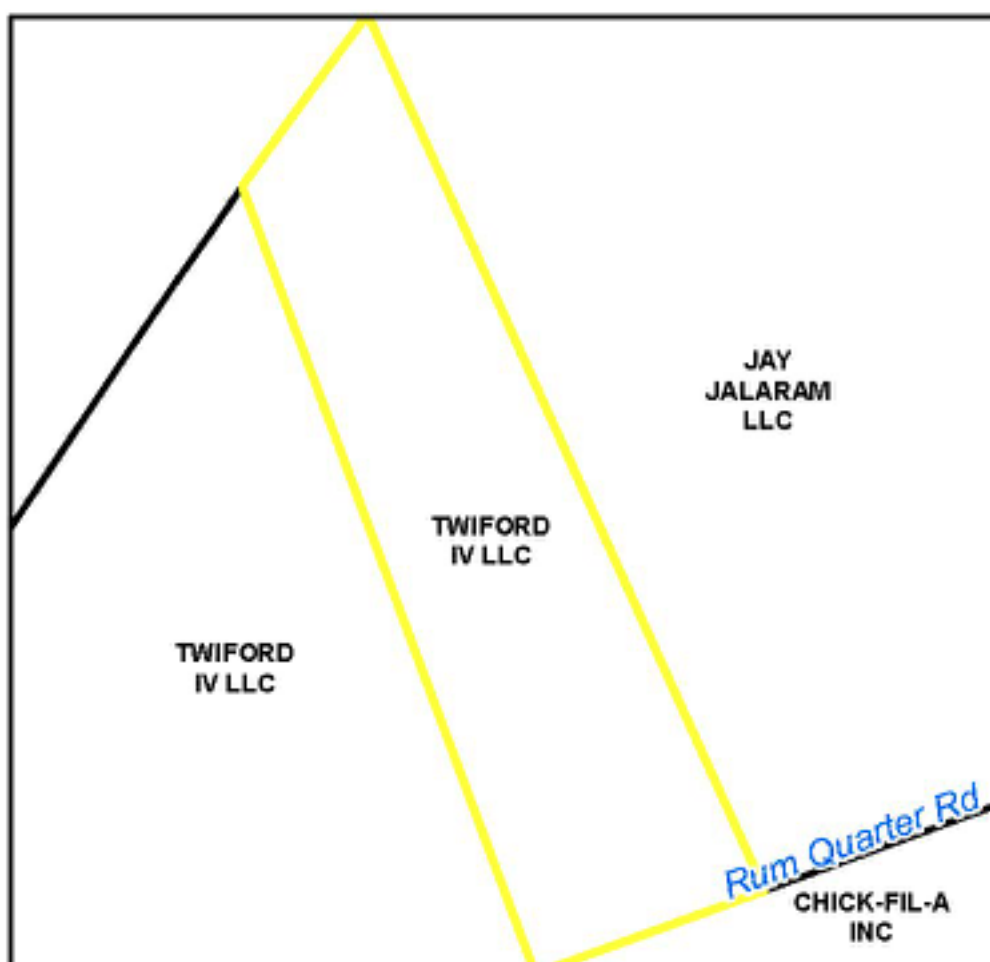
Click on any thumbnail for a full size map.

[Pasquotank Interactive GIS Map](#)

Aerial Map

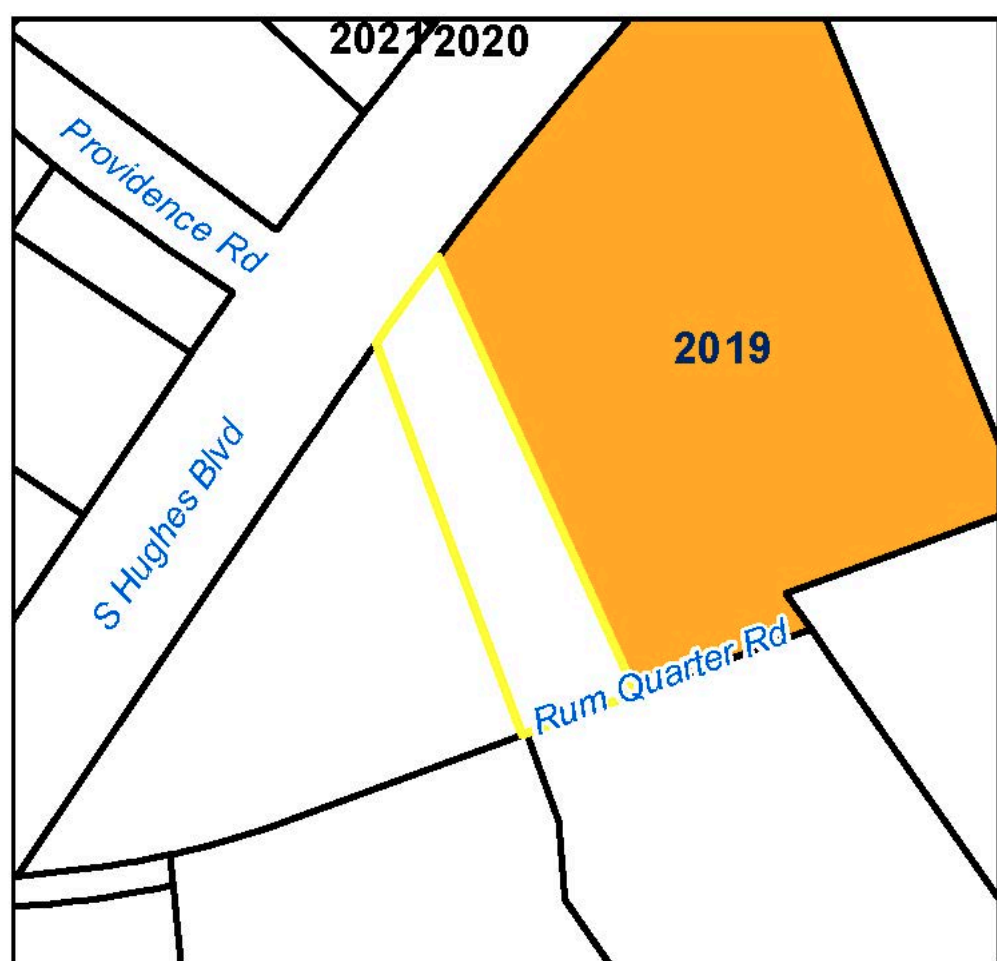


891309068715 Aerial P89-50A



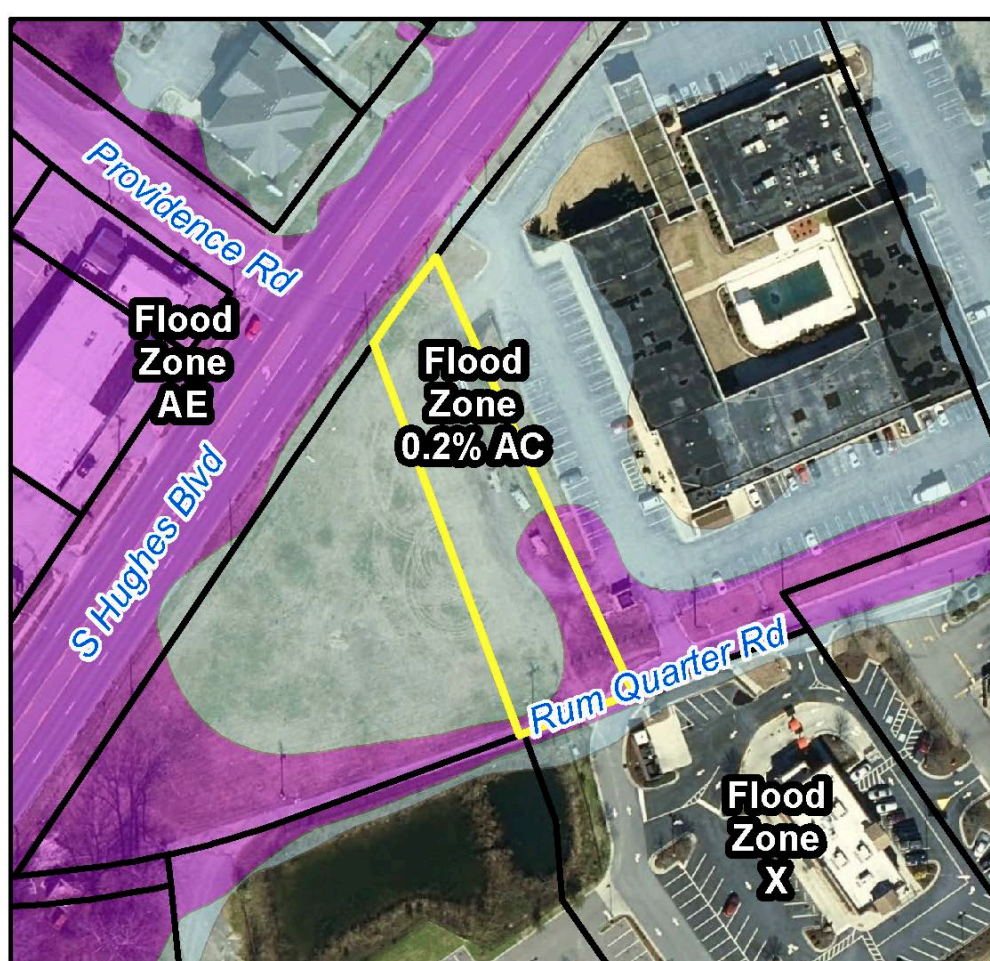
891309068715 Neighbors P89-50A

Nearby Sales



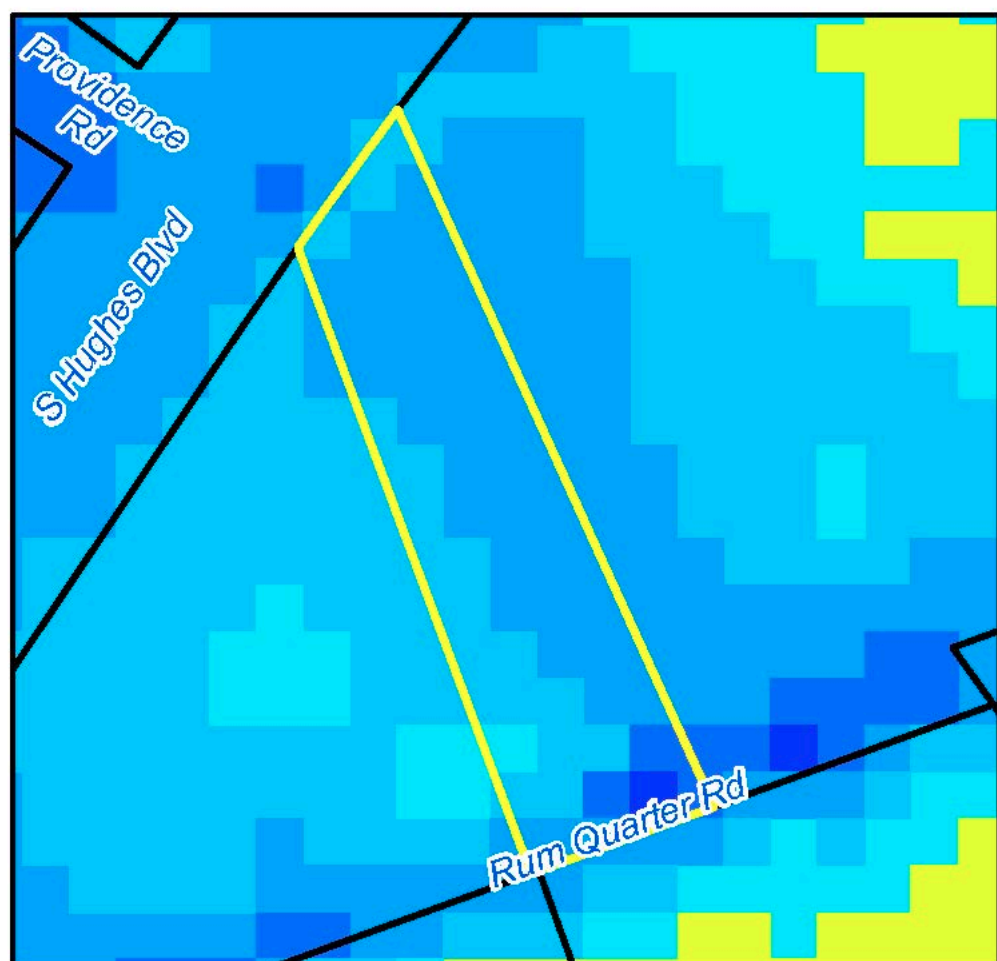
891309068715 Sales P89-50A

Flood Maps - effective Dec 21, 2018



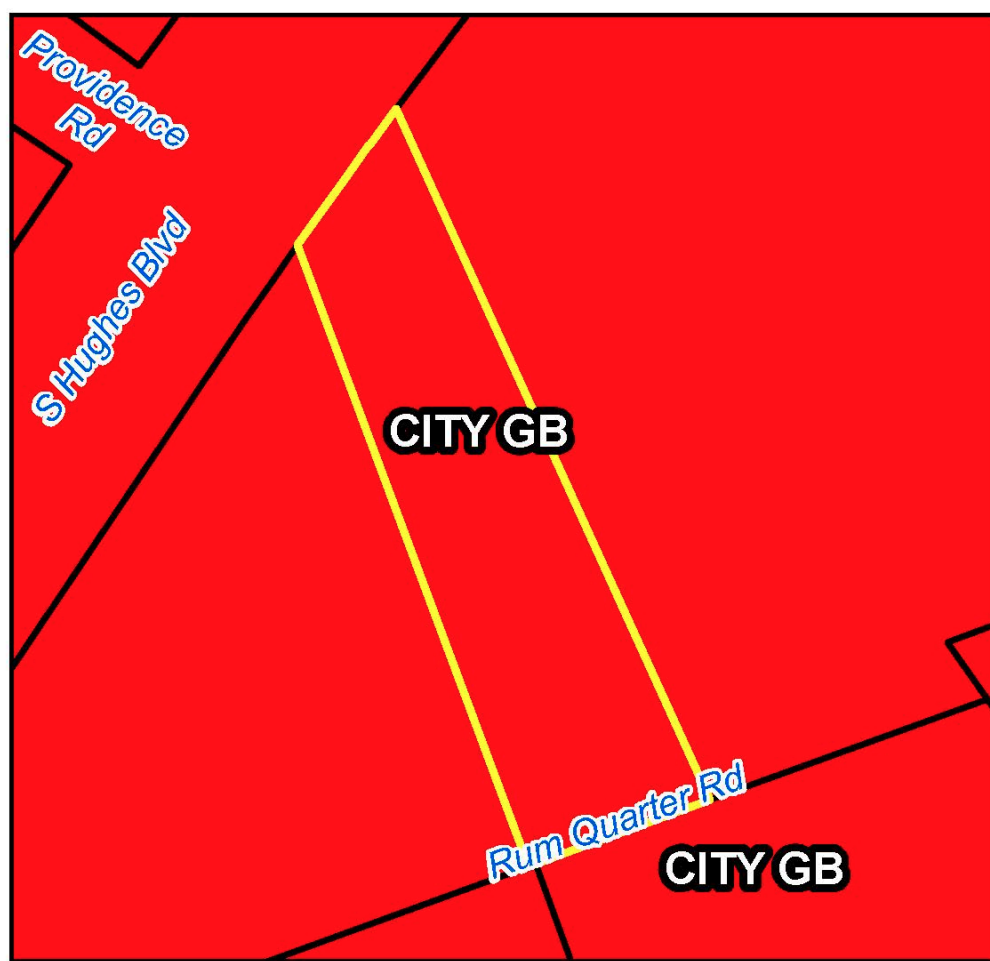
891309068715 Flood Zone P89-50A

Elevation



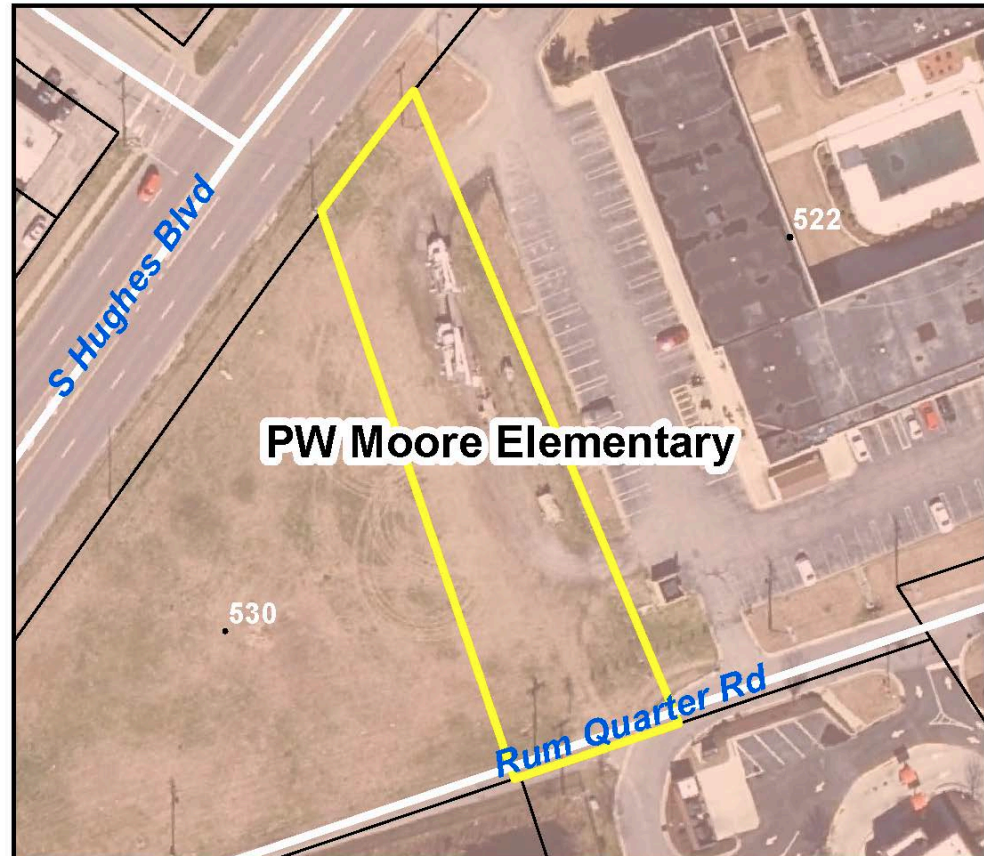
891309068715 Elevation P89-50A

Zoning

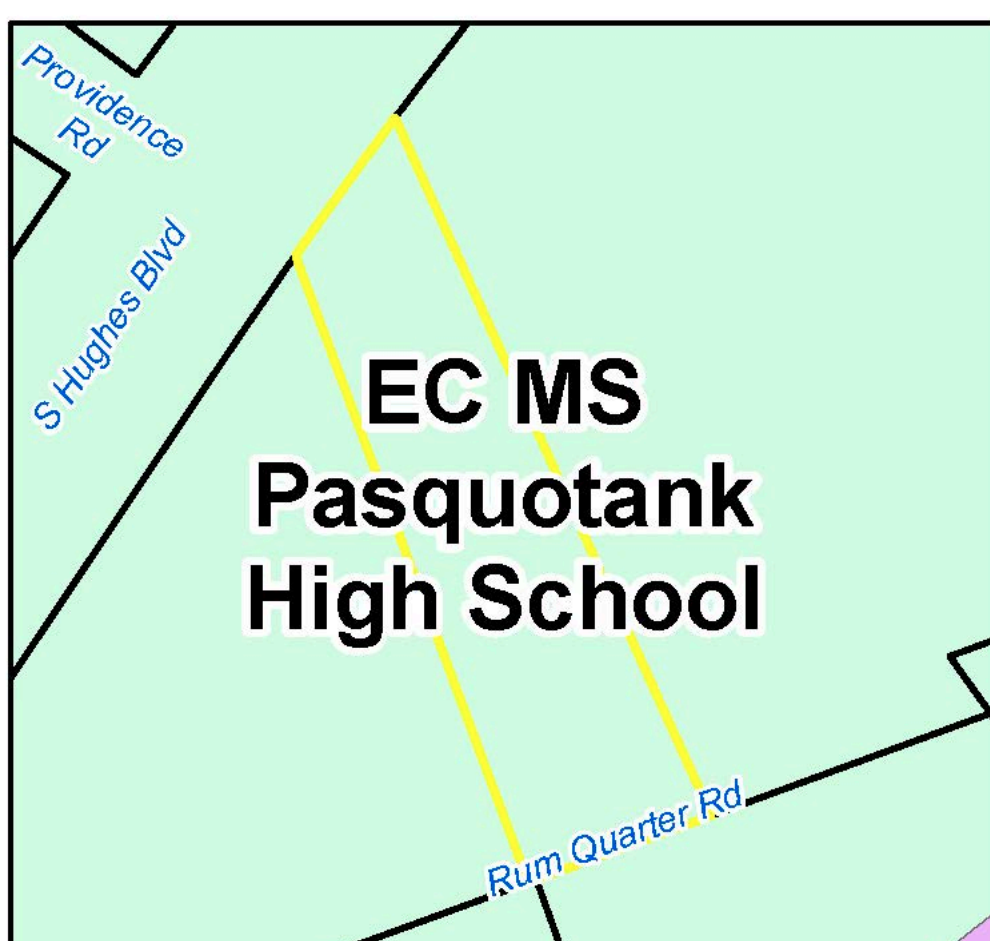


891309068715 Zoning P89-50A

Elementary School Attendance Zone



891309068715 This is for informational purposes only. ECPPS has final authority on district lines.



891309068715 Middle/High School P89-50A

Historic Imagery

- [1996](#)
- [2003](#)
- [2003 Post-Isabel](#)
- [2008](#)
- [2010](#)
- [2012](#)
- [2016](#)