

Pasquotank County Property Card

(click [HERE](#) for previous version)

PIN: 890302889929

MAP: P120-43

Deed Book: 1073 / Deed Page: 495 / Date: 20100113

Location: 01903 W CHURCH ST

	Prior Evaluation Year: 2006	Current Evaluation Year: 2014
Land	\$347000	\$736600
Use Land	\$0	\$0
Building	\$0	\$0
Total	\$347000	\$736600
Assessed	\$347000	\$736600

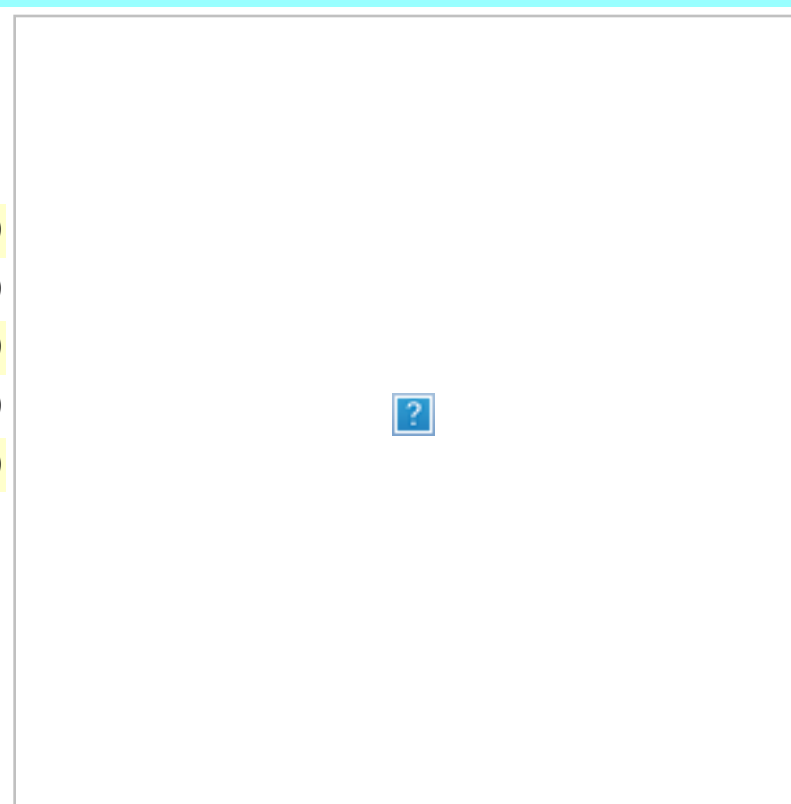
TWIFORD IV LLC
429 S HUGHES BLVD

ELIZABETH CITY, NC 27909

Acct: 0000234

Estimated County Tax: \$5671.82

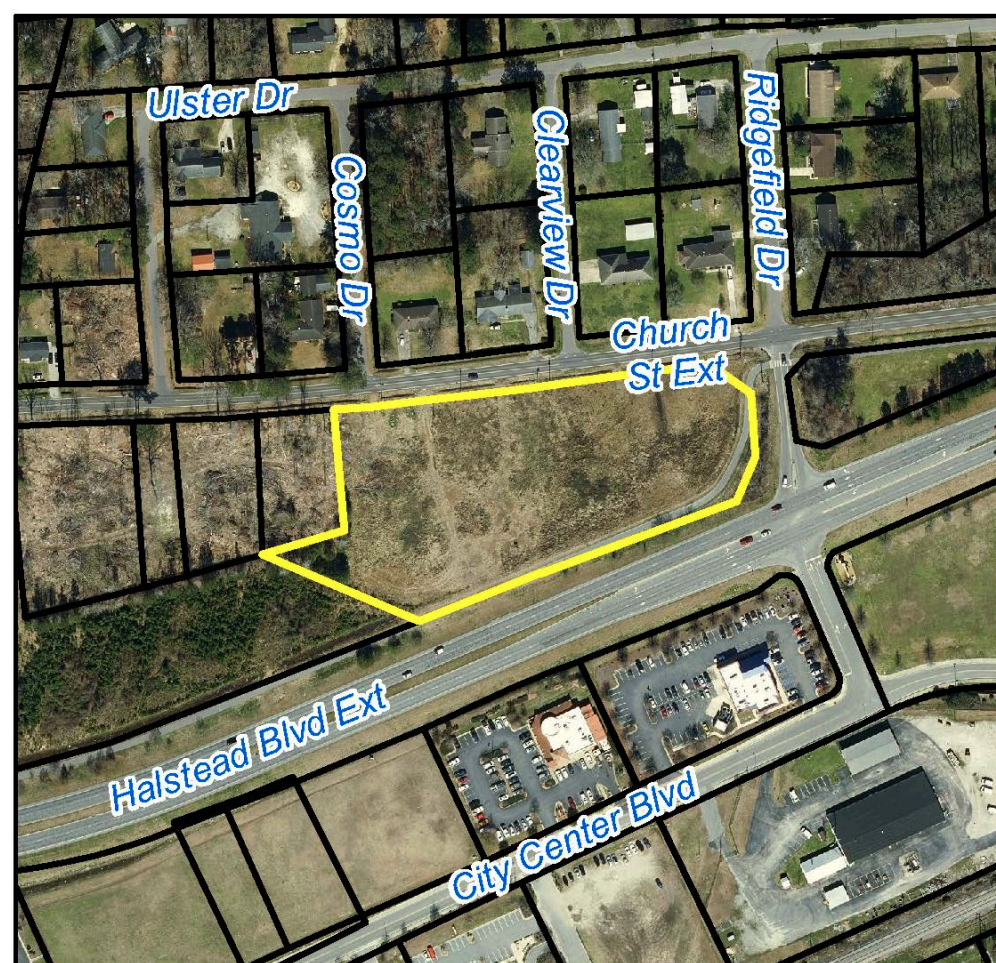
Notes AC, NBRH, ZONING CHNG PER WES



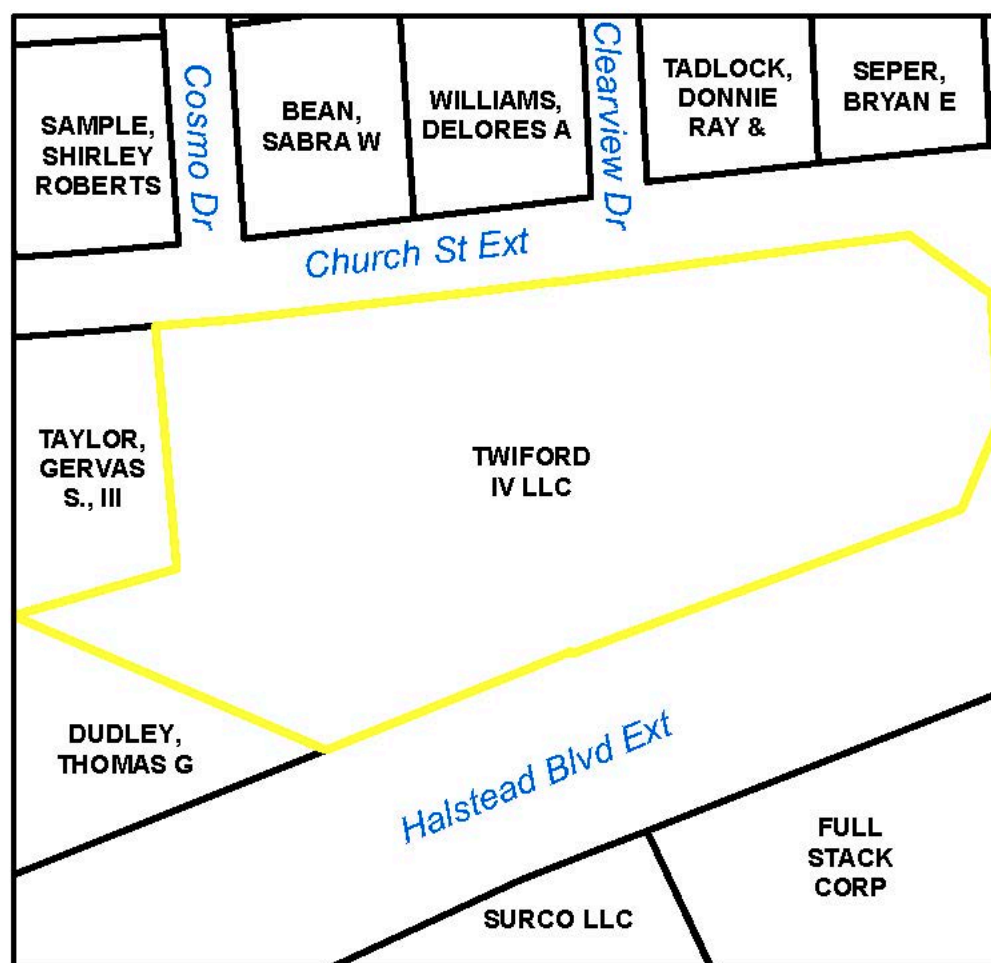
Click on any thumbnail for a full size map.

[Pasquotank Interactive GIS Map](#)

Aerial Map

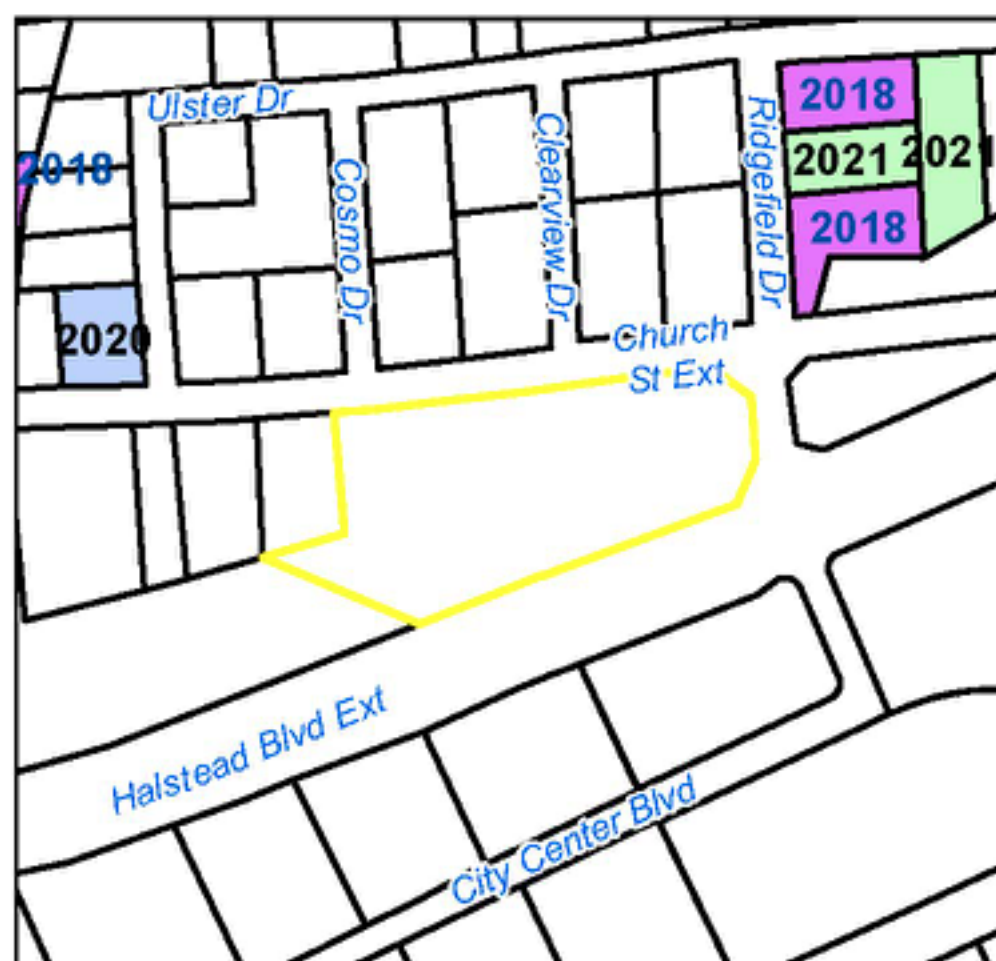


890302889929 Aerial P120-43



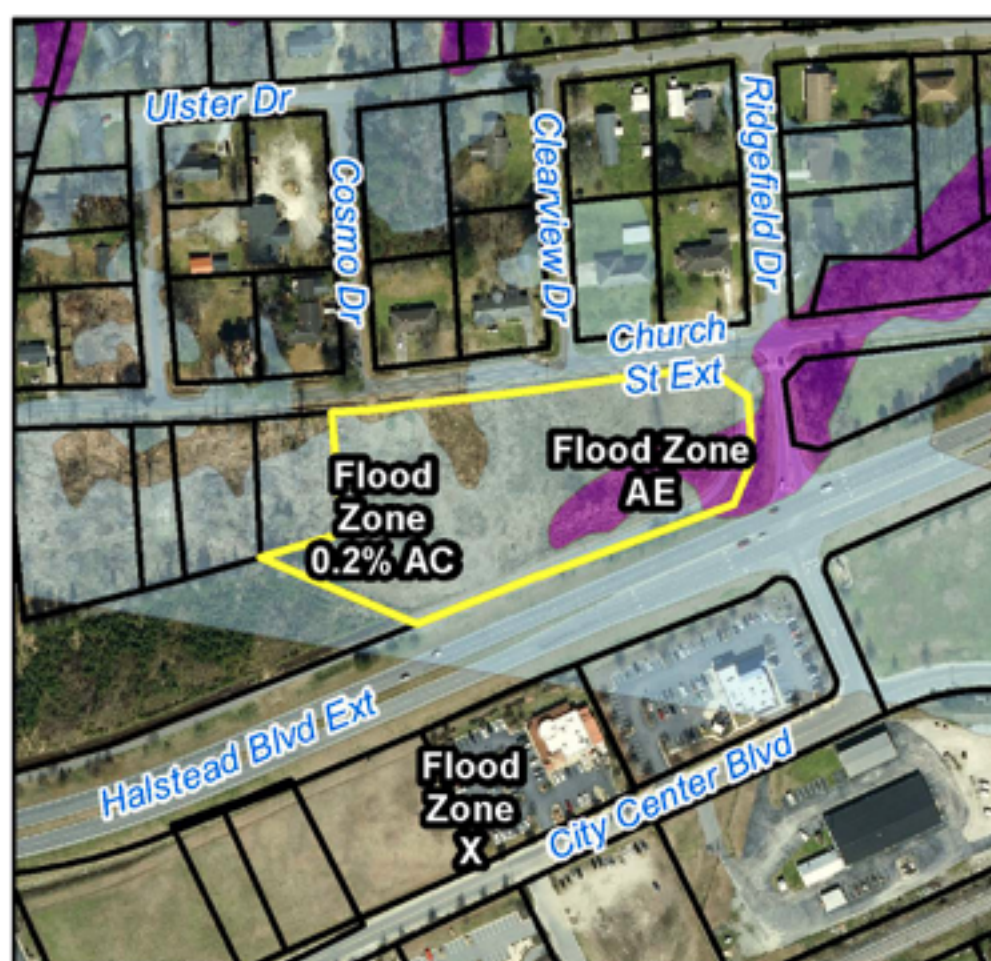
890302889929 Neighbors P120-43

Nearby Sales



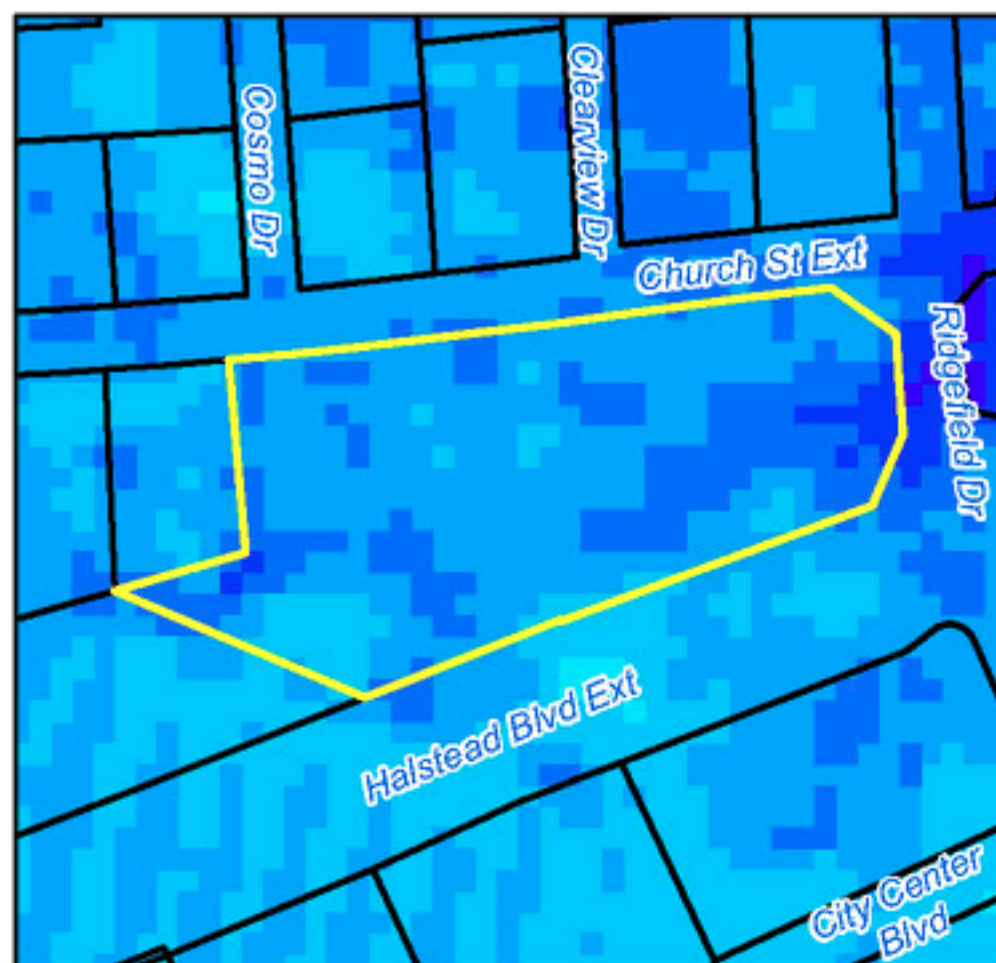
890302889929 Sales P120-43

Flood Maps - effective Dec 21, 2018



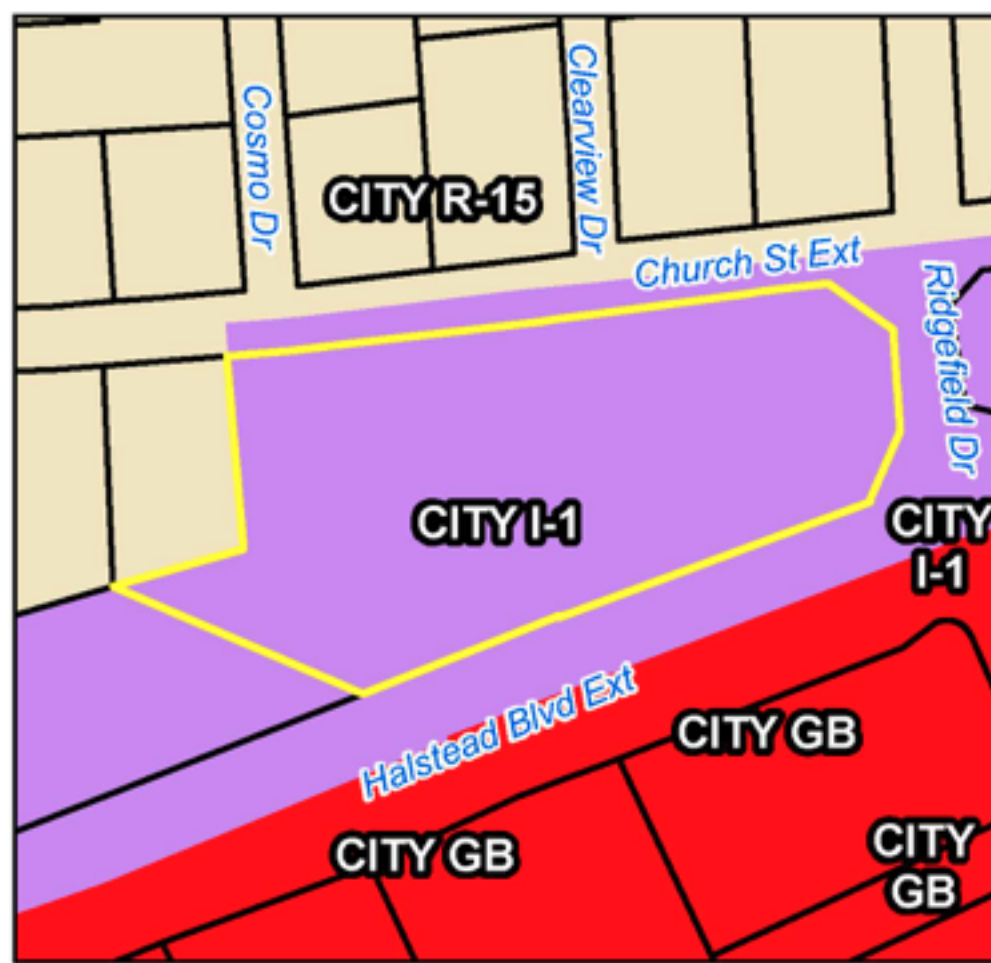
890302889929 Flood Zone P120-43

Elevation



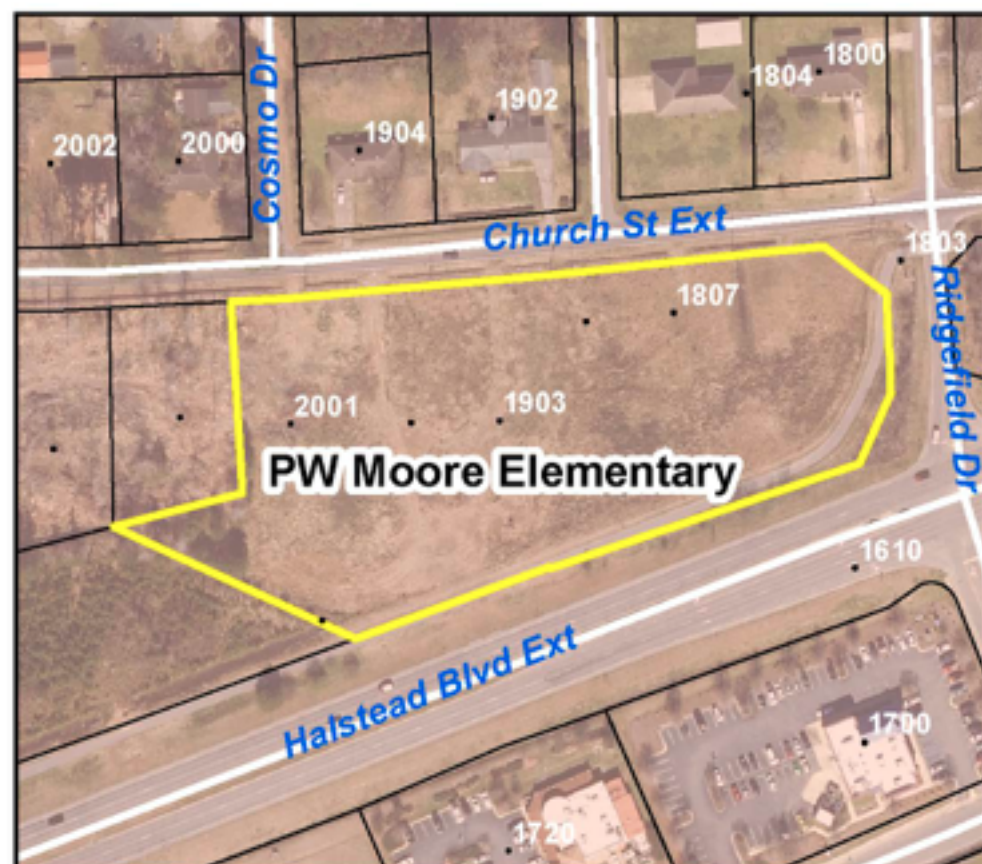
890302889929 Elevation P120-43

Zoning

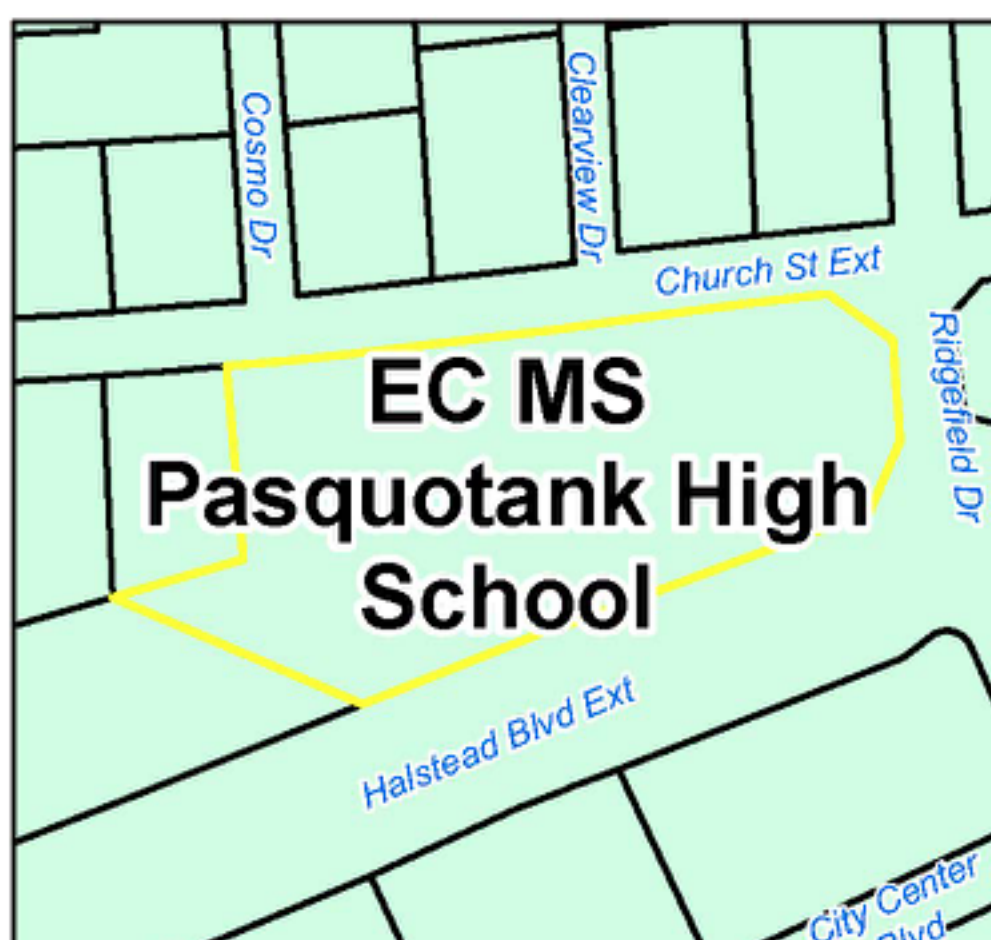


890302889929 Zoning P120-43

Elementary School Attendance Zone



890302889929 This is for informational purposes only. ECPPS has final authority on district lines.



890302889929 Middle/High School P120-43

Historic Imagery

[1996](#)[2003](#)[2003 Post-Isabel](#)[2008](#)[2010](#)[2012](#)[2016](#)